

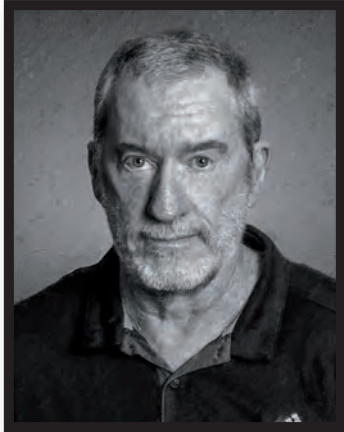
This Month - Still Life

A man-made arrangement of objects. Flowers - google the Dutch masters.



Still Life with Crayfish
Ben Clark

President's Report



The club meets at 7.30pm on the first and third Tuesday of every month (except January) at the North Fremantle Community Hall: 4 Thompson Road, North Fremantle (Harvest Road end). See the map at the bottom of our home page: www.fremantlecameraclub.com.

The first Tuesday is an educational evening and the third Tuesday is competition night. In addition there are social outings organised to improve and share our photography skills. See information in this month's Freographic and on the website. Guests are always welcome. Become a club member today!

Welcome to Freographic May/June 2023 issue

Hi folks..

Whaaaat..is it tax-time already, must be old age catching up with me.. it just seems to be happening faster and faster every year. Big thanks to our committee members who keep the activities up and running each month. Some interesting and stimulating Education evenings, and some stunning images come through in our monthly competitions. It never ceases to amaze me in the originality and creativity that comes through both in Digital and Prints each month. Keep them coming!

Just a quick mention to a couple of club members that have excelled in recent months. Anne Bonser got a 3rd placing in the Australian Emerging Photographers competition with her "Primary Impact" portfolio of 3 images in the Architecture category. (I've attached her 3 images). I was also lucky enough to get named in the top 20 in Australian Emerging Photographers competition in the Portraits category with my portfolio of Amina (Images attached). Locally, we have had a few members successful in the WA Photo Salon exhibition with Nadine Henley, Paul Anderson, Shirley Johnson, Jeff Spickett and myself having images exhibited at Central Park building in the city. The quality of prints in the exhibition was amazing, with over \$14,000 in prizes up for grabs. Unfortunately none of use were that lucky.

Contact emails

The following email addresses have been set up for FCC business.

Secretary: secretary.fremantlecameraclub@gmail.com

Treasurer: treasurer.fremantlecameraclub@gmail.com

Freographic: editor.fremantlecameraclub@gmail.com

Website: web.fremantlecameraclub@gmail.com

Digital competition entries: fremantlecameraclub@gmail.com

On the Club competition front, we continue to have a great response in the Digital Open and Set Subject categories with a combined 50 or so images submitted each month, but alas we tend to be dropping numbers in the Print categories. If you feel like getting some information about Printing etc don't hesitate to get in touch with the committee or alternatively contact Jason Eagle at his Printing and Framing business (IFS Images Frames Signs). From a personal perspective, he does all of my exhibition printing, and does an amazing job with paper selection and Printing and don't forget, FCC members get a discount on all Printing.

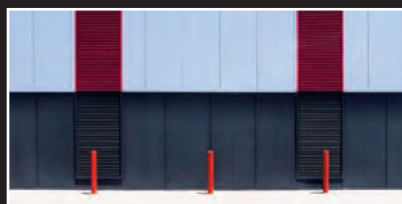
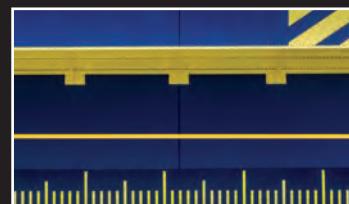
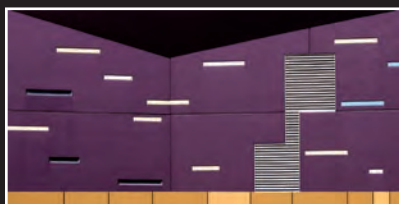
To finish up, the introduction of a Peoples Choice Award for Best Print on the Competition night has been going really well. Paul Anderson has taken out 2 monthly Awards so far with some great Prints but in June we had joint Award winners with 3 members all getting equal votes, Jeff Spickett, Nadine Henley, and Alison Thorburn all getting 4 votes each. The Peoples Choice Award will be decided at the end of the year with total votes received in all monthly competitions throughout the year.

Pat Hallaran
President

Australian Emerging Photographers Competition

Anne Bonser

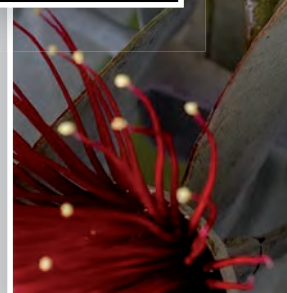
3rd placing in the Australian Emerging Photographers competition with her "Primary Impact" portfolio of 3 images in the Architecture category.



Pat Hallaran

Top 20 in Australian Emerging Photographers competition in the Portraits category with my portfolio of Amina.





■ MAY

Education Report

Our presenter for May was Beth Baker, who specializes in photographing flora and fauna. Particularly in Glen Forrest, Darlington, Kings Park, the Murchison and Cape Naturaliste region of Western Australia.

Beth depicted images of her work, and explained what she looks for in capturing an image and how best to bring out the beauty in nature that surrounds us every day.

Something so simple can turn into an amazing and striking image, be it in colour or mono.

Wild About Natives is a beautiful book Beth has created, and is an inspiring book for many photographers.

Follow Beth's work on Instagram and her website below:

<https://offpen.com.au>

Marlene Bishop
Education Officer



JULY 4th

Education Night

**Howard and Sally Worth
Alchemy Creative Collective**

Born and raised in London, Sally graduated from Croydon College of Technology before being employed by Young and Rubicam, the third largest advertising agency in the world at that time, where she led a team of home economists engaged in product development, design and marketing. She was responsible for major accounts including Cadbury, Heinz and Unilever, working on some of their best-known campaigns.

Born and raised in Perth's southern suburbs, Howard utilises a range of media in his painting including oils, acrylics and pastels as well as found materials. Although always engaged in painting and sculpture at a personal level, (as a teenager, his "junk" sculptures created from materials salvaged from the local tip transformed his parents' garden into something of an art park) his career as a film and television writer, producer, director and educator meant that his art had to remain a secondary activity until recently. However, when he has had the opportunity to dedicate himself to his art, he has enjoyed marked success, having exhibited in Melbourne's Wattletree Gallery in 1992, while his "Kimberley" series was displayed in Compass Airlines business class lounges in the same year. He has also exhibited in the Old Bakery gallery in Maylands, and his paintings are in private collections across Australia.

**So come along and enjoy the art and discussions of
Alchemy Creative Collective.**

Spring In The Hills – Gem Camera Club

SPRING IN THE HILLS 2023 PHOTOGRAPHIC COMPETITION AND EXHIBITION



Image: "Lost in the Forest" Debbie Stevens

5 Categories | People | Macro/CloseUp |

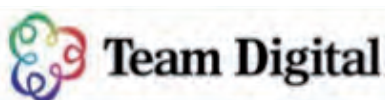
| Scapes: Urban, Sea, Land | Animal/Bird: Wild, Domestic |
Pictorial/Open.

Digital Entries: Open June 26 and Close Midnight August 6, 2023

For full details, check the club website... www.gemcameraclub.com.au/spring-in-the-hills



PLATINUM SPONSORS



GOLD SPONSORS

SILVER SPONSOR



ROYAL
AGRICULTURAL
SOCIETY
of WA

PHOTOGRAPHIC COMPETITION 2023

The Perth Royal Show Perth National Photographic Exhibition is the most prestigious industry competition held in WA.

The program conducted by the Royal Agricultural Society of Western Australia (RASWA) celebrates the best in Western Australia.

The evocative images of the Perth National Photographic Exhibition are a showcase of talent and technique from around Australia. The images will be on display at the Photography Pavillion during the Perth Royal Show with the public invited to vote for their favourite under the People's Choice banner.!

The 2023 Photographic is now open for entries, but closes on **Sunday 23rd July 2023**, so be sure to be quick and enter now.

Images can be entered in one of six (6) classes.

- 1. Youth**
- 2. Open Colour**
- 3. Nature**
- 4. Australian Rural Life**
- 5. Creative / Altered Reality**
- 6. Monochrome**

For details see:

<https://perthroyalshow.com.au/competitions/national-photographic-exhibition/>

Club Competition Nights

Judge: Ron Speed

May's Subject: Mono
(Lines & Curves)

Lines and curves have a significant compositional role that focuses the viewer's attention on some part of the image and influences the interpretation of the image. Lines and curves can also add a sense of movement.



Gold
Down Down Down
Ben Clark



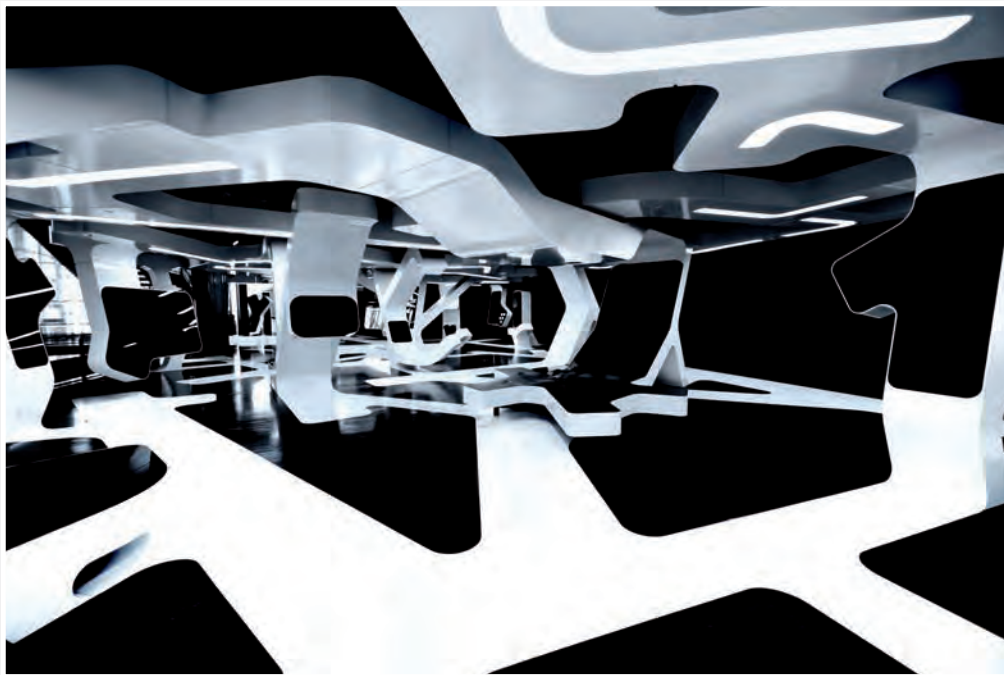
Gold
City Icon
Jan Robinson



Gold
Maton Magic
Alison Thorburn

Club Competition Nights

Digital Subject May



Gold
Nerve centre
Adam Smalley



Gold
Stock Yards
Helen Newnham

Club Competition Nights

Digital Subject May



Silver
Curved reflections
Romola Nocum



Silver
King River
Helen Rowbottom



Silver
Entrance
Shirley Johnson



Silver
Walking to work
Paul Anderson



Silver
Waiting for news
Jeff Simper



Silver
Fruit Bowl
Julie Hillin

Club Competition Nights

Digital Subject May



Silver
Sydney Fountain
Helena Kristel



Silver
Tin and Glass
Stuart Bridge



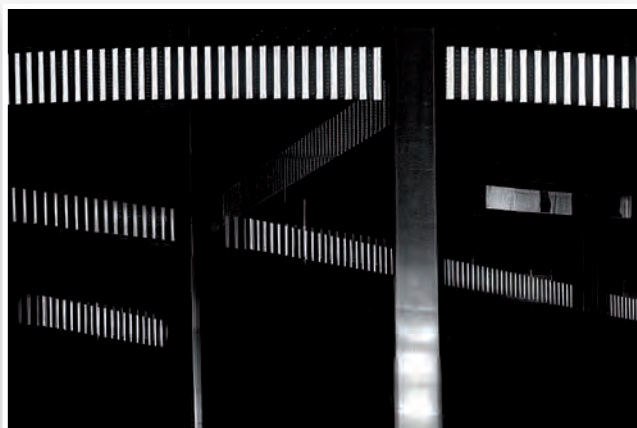
Silver
Walk on the bridge
Jeff Spickett



Silver
Cathedral Square
Pat Halloran



Silver
Up and Away
Jane Fraser



Silver
Lines and Curves
Nadine Henley

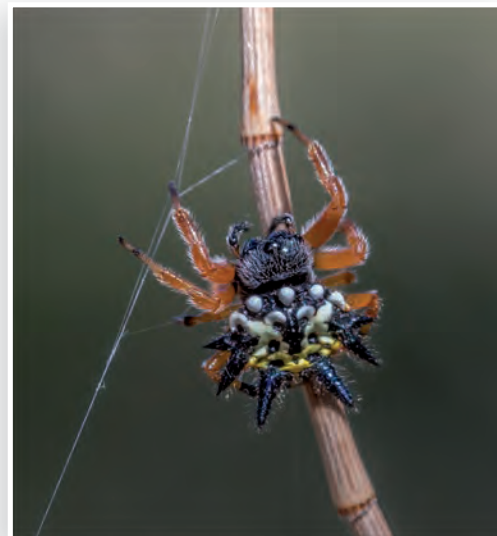
Club Competition Nights

Digital Open

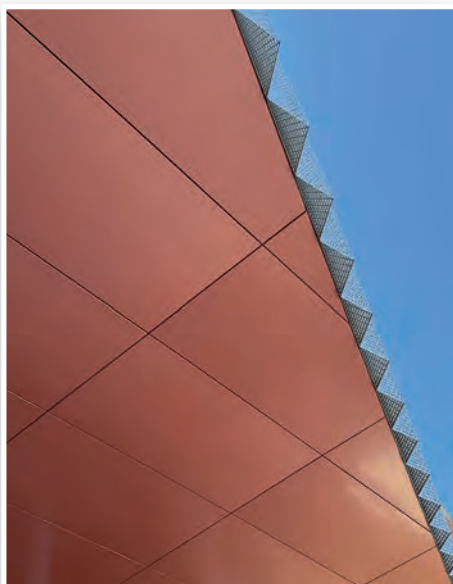
May



Gold
For TT
Julie Hillin



Gold
Christmas Spider
Jan Robinson



Gold
At the museum
Carol Zaugg



Gold
Black Swan
Christine Chester



Gold
Nelson Falls
Ben Clark

Club Competition Nights

Digital Open

May



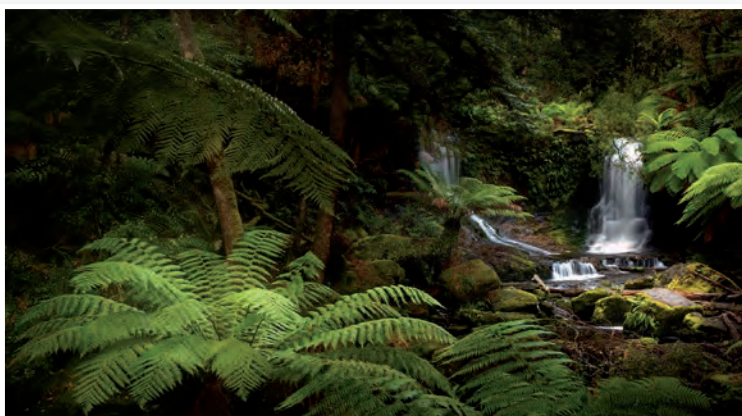
Gold
Counting fifties
Jane Fraser



Gold
Trees in the mist
Helen Newnham



Gold
Spot the spider
Paul Anderson



Gold
Majestic Graceful Peace
Alison Thorburn



Gold
As the crow flies
Adam Smalley



Gold
Tiny Predator
Helen Rowbottom

Club Competition Nights

Digital Open

May



Silver
Early Morning rower
Jeff Spickett



Silver
White Flowers
Phil Burrows



Silver
Falling leaves
Nadine Henley



Silver
Cotesloe sillhoutte
Romola Nocum

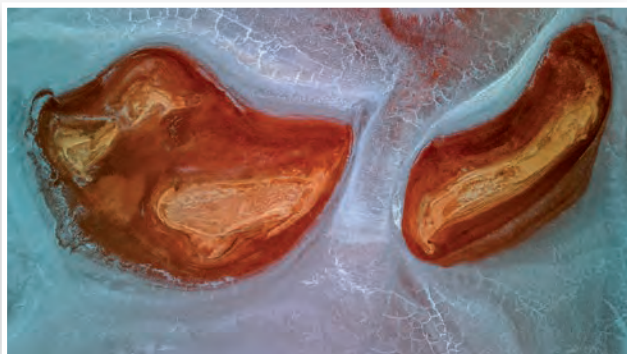


Silver
Framed
Lawrie Beilin

Club Competition Nights

Digital Open

May



Silver
Kidneys
Shirley Johnson



Silver
Past Glory reflected
Penny Kirkland-Smith



Silver
Sunrise Two Jack Lake
Helena Kristel



Silver
Me and my shadow
Mary Outh-Aut



Silver
Street Spain
Matt Landy

Club Competition Nights

Print Subject May



Gold
X Factor
Lawrie Beilin



Gold
They are Coming
Alison Thornburn



Gold
Mirror Image
Adam Smalley

Club Competition Nights

Print Subject May



Silver
A Place to Sit
Jeff Spickett



Silver
Cadogan Arches
Pat Halloran

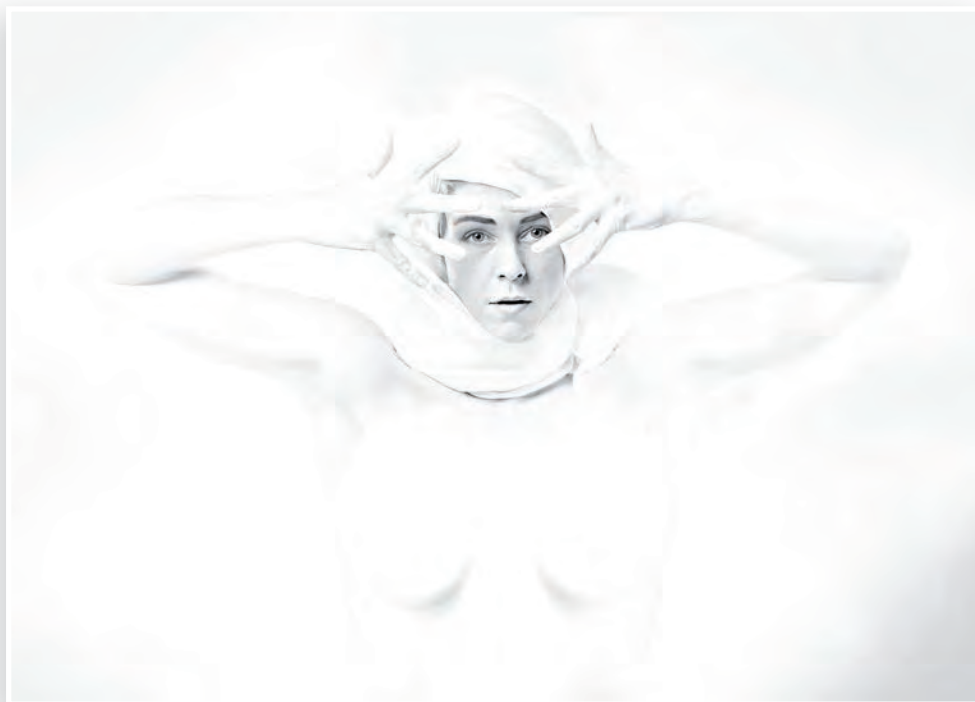


Silver
Bell Tower
Paul Anderson

Club Competition Nights

Print Open

May



Gold
Entranced
Pat Halloran

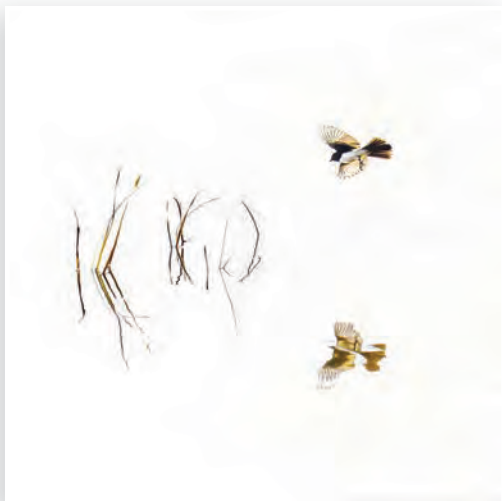


Gold
Bird Bath
Adam Smalley

Club Competition Nights

Print Open

May



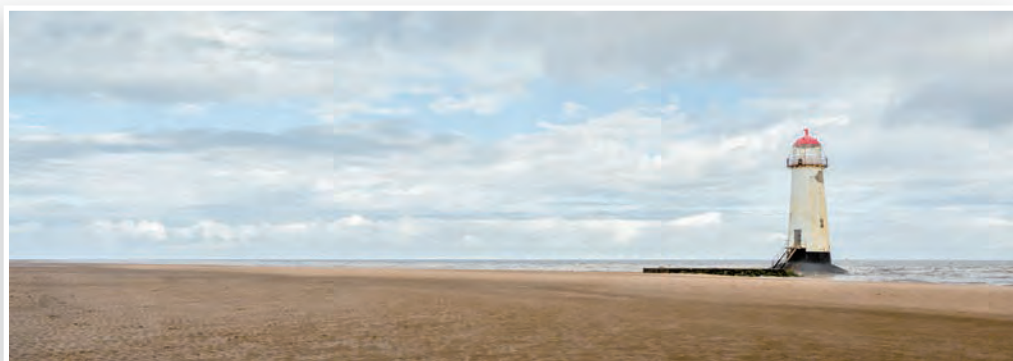
Silver
Willywagtail and Reeds
Nadine Henley



Silver
Hanging out to dry
Jeff Spickett



Silver
Norman
Lawrie Beilin



Silver
Point of Ayr
Paul Anderson

Club Competition Nights

JUNE **Still Life**

A man-made arrangement of objects.
Flowers - google the Dutch masters.
The main idea is to create a good
composition and the objects used
should be compatible with one another.

Judge: Barry Richards

Gold
Covid 19 Extra
Adam Smalley



Gold
Still Life with Crayfish
Ben Clark

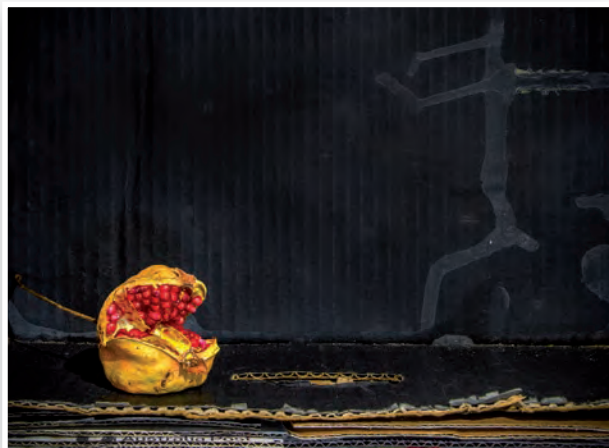
Club Competition Nights

Digital Open

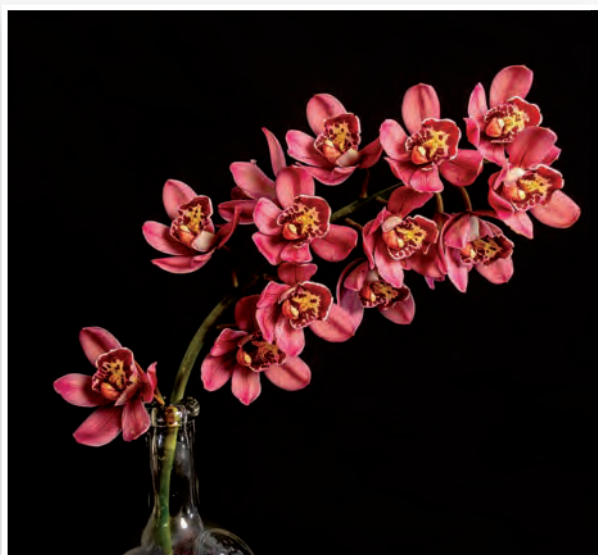
June



Silver
Mum's Memoriam
Alison Thorburn



Silver
Old fruit box
Jeff Spickett



Silver
Orchid
Penny Kirkland-Smith



Silver
Retro Design
Phil Burrows

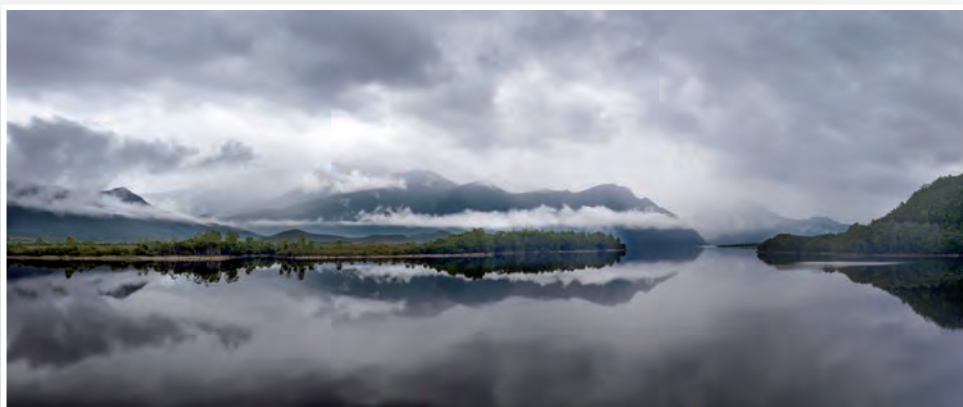
Club Competition Nights

Digital Open June



Gold
Busy Cuckoo Bee
Jan Robinson

Gold
Havana
Lisa Cesari



Gold
Burbury Brilliance
Alison Thorburn



Gold
In Splendid Isolation
Helen Newnham



Gold
Shadow ahead
Lawrie Beilin

Club Competition Nights

Digital Open

June



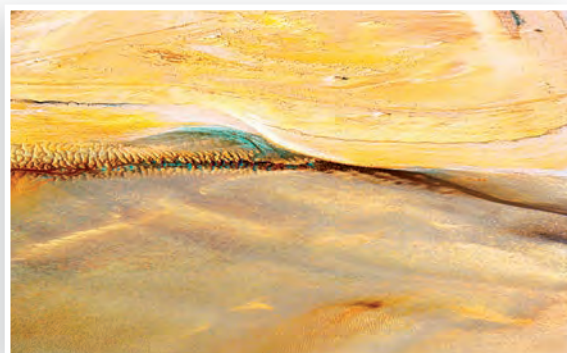
Silver
Leaves
Phil Burrows



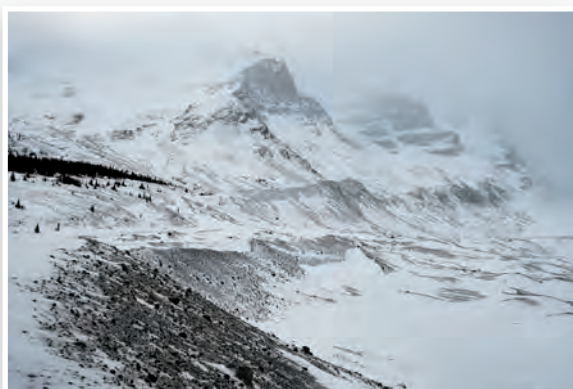
Silver
Dynamic Duo
Pat Halloran



Silver
In Golden Hour
Adam Smalley



Silver
Avulsion
Julie Hillin



Silver
Icefield Emerging
Samantha Park



Silver
Queen Anne's Lace
Nadine Henley

Club Competition Nights

Print Subject June



Silver
Unfinished Business
Alison Thorburn



Silver
Still Life in White
Nadine Henley



Silver
Last Leaf Left
Pat Halloran

Club Competition Nights
Print Open June



Gold
Dark Angel
Adam Smalley



Gold
Ella
Pat Halloran



Gold
Cradle Reflections
Alison Thornburn



Silver
Feeding the Fledgings
Paul Anderson

Digital Results

Results of Monthly
Competition 16 May

SUBJECT		
Gold	<i>Nerve centre</i>	Adam Smalley
	<i>Maton Magic</i>	Alison Thorburn
	<i>Stock Yards</i>	Helen Newnham
	<i>City Icon</i>	Jan Robinson
	<i>Down Down Down</i>	Ben Clark
Silver	<i>Sydney Fountain</i>	Helena Kristel
	<i>Walk on the bridge</i>	Jeff Spickett
	<i>Cathedral Square</i>	Pat Halloran
	<i>Lines and Curves</i>	Nadine Henley
	<i>Waiting for news</i>	Jeff Simper
	<i>Entrance</i>	Shirley Johnson
	<i>Walking to work</i>	Paul Anderson
	<i>Up and Away</i>	Jane Fraser
	<i>Fruit Bowl</i>	Julie Hillin
	<i>Curved reflections</i>	Romola Nocum
	<i>Tin and Glass</i>	Stuart Bridge
	<i>King River</i>	Helen Rowbottom
	Bronze <i>Reflecting</i>	Christine Chester
	<i>Just Y</i>	Lawrie Beilin
	<i>Curves and swirls</i>	Penny Kirkland-Smith
	<i>Bali Bend</i>	Phil Burrows
	<i>Lead Me to the Light</i>	Marlene Bishop
	<i>Underpass</i>	Andy Outh-Aut
	<i>Shapes</i>	Mary Outh-Aut
	<i>Nurse log</i>	Michael Lewis
	<i>Lisbon Laneway</i>	Anne Bonser
	<i>City Lane</i>	Carol Zaugg
	<i>Out of the light</i>	Samantha Park

OPEN		
Gold	<i>Black Swan</i>	Christine Chester
	<i>Trees in the mist</i>	Helen Newnham
	<i>Christmas Spider</i>	Jan Robinson
	<i>Counting fifties</i>	Jane Fraser
	<i>Nelson Falls</i>	Ben Clark
	<i>As the crow flies</i>	Adam Smalley
	<i>Tiny Predator</i>	Helen Rowbottom
	<i>For TT</i>	Julie Hillin
	<i>At the museum</i>	Carol Zaugg
	<i>Majestic Graceful Peace</i>	Alison Thorburn
	<i>Spot the spider</i>	Paul Anderson
	Silver <i>Sunrise Two Jack Lake</i>	Helena Kristel
	<i>Early Morning rower</i>	Jeff Spickett
	<i>Framed</i>	Lawrie Beilin
	<i>Past Glory reflected</i>	Penny Kirkland-Smith
	<i>White</i>	Phil Burrows
	<i>Falling leaves</i>	Nadine Henley
	<i>Street Spain</i>	Matt Landy
	<i>Me and my shadow</i>	Mary Outh-Aut
	<i>Kidneys</i>	Shirley Johnson
	<i>Cotesloe sillhoutte</i>	Romola Nocum
	Bronze <i>Walking By</i>	Jeff Simper
	<i>Soliders Dance</i>	Marlene Bishop
	<i>Misty</i>	Michael Lewis
	<i>Bunbury</i>	Anne Bonser
	<i>Catharsis</i>	Pat Halloran
	<i>Cheeks</i>	Andy Outh-Aut

Print Results

Results of Monthly
Competition 16 May

SUBJECT		
Gold	<i>X Factor</i>	Lawrie Beilin
	<i>They are Coming</i>	Alison Thornburn
	<i>Mirror Image</i>	Adam Smalley
Silver	<i>Cadogan Arches</i>	Pat Halloran
	<i>Bell Tower</i>	Paul Anderson
	<i>A Place to Sit</i>	Jeff Spickett
Bronze	<i>Lines & Curves at ECU</i>	Nadine Henley
	<i>Rice Paddies</i>	Michael Lewis

OPEN		
Gold	<i>Bird Bath</i>	Adam Smalley
	<i>Entranced</i>	Pat Halloran
Silver	<i>Willywagtail and Reeds</i>	Nadine Henley
	<i>Norman</i>	Lawrie Beilin
	<i>Point of Ayr</i>	Paul Anderson
	<i>Just Looking</i>	Stuart Bridge
	<i>Hanging out to dry</i>	Jeff Spickett
Bronze	<i>Nature</i>	Paul Shann
	<i>Golden Texture</i>	Michael Lewis
	<i>Mushroom Magic</i>	Alison Thornburn

Digital Results

Results of Monthly
Competition 20 June

SUBJECT		
Gold	<i>Still Life with Crayfish</i>	Ben Clark
	<i>Covid 19 Extra</i>	Adam Smalley
Silver	<i>Mum's Memoriam</i>	Alison Thorburn
	<i>Old fruit box</i>	Jeff Spickett
	<i>Orchid</i>	Penny Kirkland-Smith
	<i>Retro Design</i>	Phil Burrows
Bronze	<i>A Very Happy Rabbit</i>	Paul Anderson
	<i>Big Ted</i>	Anne Bonser
	<i>Bygone era</i>	Helena Kristel
	<i>Home Grown</i>	Christine Chester
	<i>Lemon Tea for Two</i>	Mary Outh-Aut
	<i>Life Cycle</i>	Andy Outh-Aut
	<i>Ren at Rest</i>	Julie Hillin
	<i>Tea Time</i>	Patrick Halloran
	<i>The doctor</i>	Lawrie Beilin

OPEN		
Gold	<i>Havana</i>	Lisa Cesari
	<i>Burbury Brilliance</i>	Alison Thorburn
	<i>Busy Cuckoo Bee</i>	Jan Robinson
	<i>In Splendid Isolation</i>	Helen Newnham
	<i>Shadow ahead</i>	Lawrie Beilin
Silver	<i>Leaves</i>	Phil Burrows
	<i>Avulsion</i>	Julie Hillin
	<i>Dynamic Duo</i>	Pat Halloran
	<i>Icefield Emerging</i>	Samantha Park
	<i>In Golden Hour</i>	Adam Smalley
Bronze	<i>Queen Anne's Lace</i>	Nadine Henley
	<i>A Very Big Bird</i>	Paul Anderson
	<i>Bay of Fires</i>	Anne Bonser
	<i>Camellia</i>	Christine Chester
	<i>Observing the Ritual</i>	Penny Kirkland-Smith
	<i>Pink Lake</i>	Shirley Johnson
	<i>Rainy lunchtime at Shibuya</i>	Jeff Simper
	<i>Red-billed Quelea Flock</i>	Helena Kristel
	<i>South Mole</i>	Andy Outh-Aut
	<i>Unveiling The Lace</i>	Marlene Bishop

Print Results

SUBJECT		
Silver	<i>Last Leaf Left</i>	Pat Halloran
	<i>Still Life in White</i>	Nadine Henley
	<i>Unfinished Business</i>	Alison Thorburn
Bronze	<i>Poppies</i>	Paul Anderson
	<i>The Blue Corner</i>	Adam Smalley
	<i>A pomegranate on Reflection</i>	Nadine Henley
	<i>I wonder If</i>	Jeff Spickett

OPEN		
Gold	<i>Cradle Reflections</i>	Alison Thorburn
	<i>Ella</i>	Pat Halloran
	<i>Dark Angel</i>	Adam Smalley
Silver	<i>Feeding the Fledgings</i>	Paul Anderson
Bronze	<i>Shoveller</i>	Lawrie Beilin
	<i>Roosting Blue Banded Bees</i>	Helen Rowbottom
	<i>A hot day at the beach</i>	Nadine Henley
	<i>Anything for me</i>	Jeff Spickett

2023 Competition Leaderboard

Scores to June 2023

SUBJECT DIGITAL	
Ben Clark	19
Adam Smalley	18
Alison Thorburn	14
Mary Outh-Aut	14
Jan Robinson	14
Helen Rowbottam	11
Christine Chester	11
Jeff Spickett	11
Shirley Johnson	11
Pat Halloran	11
Phil Burrows	11
Helena Kristel	11
Nadine Henley	10
Jane Fraser	10

OPEN DIGITAL	
Jan Robinson	21
Adam Smalley	20
Alison Thorburn	18
Helen Newnham	17
Christine Chester	17
Ben Clark	17
Julie Hillin	16
Pat Halloran	16
Lawrie Beilin	15
Carol Zaugg	14
Nadine Henley	14
Shirley Johnson	13
Helen Rowbottam	13

Scores to June 2023

SUBJECT PRINT	
Adam Smalley	19
Alison Thorburn	15
Pat Halloran	15
Lawrie Beilin	14
Jeff Spickett	12
Nadine Henley	8
Helen Rowbottam	4
Stuart Bridge	2

OPEN PRINT	
Adam Smalley	25
Pat Halloran	22
Alison Thorburn	17
Jeff Spickett	12
Lawrie Beilin	11
Helen Rowbottam	10
Nadine Henley	9
Stuart Bridge	8
Paul Shann	2

2023 Club Subjects

Competition nights are held the third Tuesday of each month. The subjects for the monthly competitions have been set by the Committee and are as follows: Please pay careful attention to the definitions.

JULY **Architecture**

(Shape and Patterns in
Colour or Mono)

Architecture can be a building or structure of any type, old or modern, exterior or interior. Any part including windows, doors, roofs, stairways, steeples, towers, domes, etc.

AUGUST **Landscape**

(Long Exposure - The Grace Munday
Landscape Award)

Can include any subject that is treated pictorially, embodying the elements of good design, arrangement or composition, which reflects the personal interpretation of the photographer. Images may be colour or black and white.

SEPTEMBER **Travel**

(Mobile Phone)

A Photo Travel image expresses the characteristic features or culture of a land as they are found naturally. Close up pictures of people or objects must include features that provide information about the location.

OCTOBER **Open**

(Caught in the Act)

An image showing a featured subject doing something surreptitiously. It may be spontaneous or contrived but will obviously fare better if it looks natural.

NOVEMBER **Colour (Triptych)**

A triptych is a presentation made up of three (and only three) distinctly separated photographic images displayed on a common background, that has to be a series that tells a story.

Competition Rules

See the club website for the full competition rules and responsibilities. In summary:

All financial members of the club are eligible to enter monthly competitions to a maximum of one entry in each of the four competitions (print and digital sections, comprising open and set subject, in either colour or monochrome). All images must be the original photographic work of the member, but may be digitally enhanced.

When entering the next competition remember that Gold and Silver award images may not be re-submitted in either digital or print format at another monthly competition. Similarly, images that come very close to resembling a previous Gold or Silver award entry are ineligible for entry in any section. Bronze and other entries may be converted to a higher standard based upon the judge's comments and only re-submitted in one subsequent competition.

Digital Images: Maximum digital image size is 1920(width) x 1080(height) pixels. A different ratio may be applied to the digital image (e.g. square or 'letterbox'), provided the maximum sizes are not exceeded. There is no limit on resolution.

Each digital image must be submitted as a JPEG file (*.jpg) and in sRGB profile and must have the following file title format: Digital Image Title_Open / Subject_Competitor Number.jpg e.g. Snowflakes_Open / Subject_151.jpg. Digital images are to be submitted to the Digital Images Coordinator by emailing them to fremantlecameraclub@gmail.com by 12 noon on the Sunday nine days prior to competition night.

Prints: Maximum print size is 40 x 50cms, including matt and backing. There is no minimum size. Maximum thickness of entry is 5mm, including print, matt and backing. Any print that does not fit within these maximum sizes may not be accepted for competition. Prints may be produced either commercially (i.e. a printing service) or by the member. Print entries must be properly secured to an appropriate backing of either cardboard or foam core. Members must not submit prints that may potentially damage other entries when packed or during transport.

Each print must be labelled with the following format: Image Title; Open / Subject; **and Competitor Name and number (ie not just number)** e.g. Raindrops; Open / Subject; John Smith 203, on the reverse side of the print in the top left hand corner of the mount board. This makes it easier to return prints.

Prints must be delivered to the Print Competition table at Club meetings no later than 7:15pm. The prints are to be placed facedown in the relevant competition area ie Subject or Open.

Points will be allocated in the monthly competition on the following basis:

- | | | |
|----|-------------------|---------------|
| a. | Gold | 5 points; |
| b. | Silver | 3 points; |
| c. | Bronze | 2 points; and |
| d. | Non-winning entry | 1 point |

Fremantle Camera Club 2023

Committee Members



Pat Halloran
President and
Competition Director



Matt Landy
Secretary



Marlene Bishop
Education Officer



Stuart Bridge
Treasurer



Adam Smalley
Freographic Editor /
Communications



Dave Lester
Committee Member



Jane Fraser
Committee Member

SPONSORS

The club's annual competition prizes are generously sponsored by the following companies. Please show them your support by visiting them when you're next looking for equipment or advice.



Camera Electronic
230 Stirling St, Perth WA 6000
Phone: (08) 9328 4405
www.cameraelectronic.com.au



Team Digital
268 Lord Street, Perth WA 6000
Ph: (08) 9328 3377
www.teamdigital.com.au



Fitzgerald Photo Imaging
350 Fitzgerald St, North Perth WA 6006
Phone: (08) 9328 3778
www.fitzgeraldphoto.com.au



Images Frames Signs
m: 0480 112 179
p: Shop 6, 676 Beeliar Drive, Success, WA, 6164
w: www.imagesframessigns.com.au
e: info@imagesframessigns.com.au